



**For sale Monaco - Fontvieille**  
FONTVIEILLE - SEASIDE PLAZA - 2-BEDROOM FLAT - SEA VIEW

**8.500.000 €**

**3**  
Rooms

**2**  
Bedrooms

**2**  
Bathrooms

**166 sqm**  
Total area

**1**  
Parking

Beautiful 2-bedroom apartment offering an ideal living environment in the heart of Fontvieille, in a luxury residence with exclusive services.

7 Avenue des Papalins  
« Immeuble Michelangelo »  
98000 Monaco

V1585  
1 / 5

Tél : +377 92 16 16 32  
monaco@barnes-international.com  
www.valeri-agency.com



## Caractéristiques du bien

Product type :	Apartment	Num rooms :	3 rooms
Building :	Seaside Plaza	District :	Fontvieille
Living area :	108 m <sup>2</sup>	Terrace area :	58 m <sup>2</sup>
Total area :	166 m <sup>2</sup>	Bedrooms :	2
Bathrooms :	2	Parking :	1
Condition :	Very good condition	Release date :	Now
Ref. :	V1585		

## Descriptions

Ideally located in the sought-after Fontvieille district, in the Seaside Plaza, one of Monaco's best-known residences, with top-of-the-range amenities including a 24/7 concierge, swimming pool and fitness room.

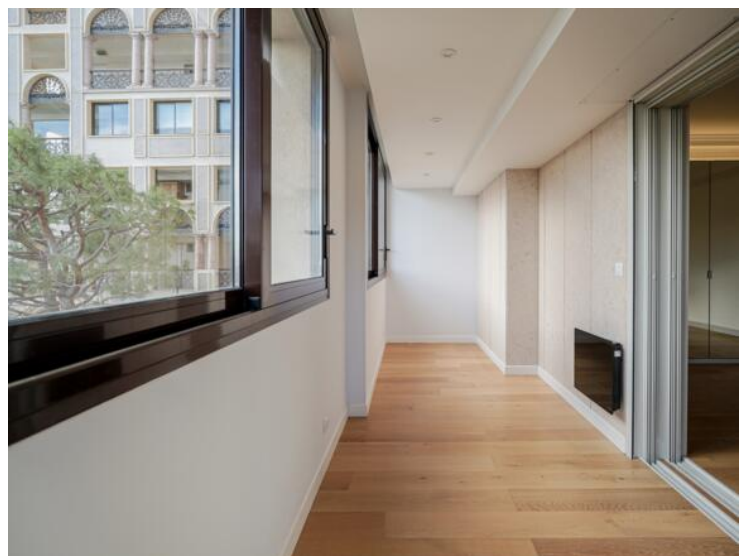
This 2-bedroom flat, in perfect condition, is ideal for a family and is just a short walk from shops, schools, restaurants, beaches and leafy parks.

This discreetly elegant corner flat has a double south-east/north-west exposure. All rooms open onto a spacious terrace, ideal for enjoying the Mediterranean climate. The double-glazed windows ensure optimum thermal and acoustic comfort.

It comprises a spacious double living room with open-plan kitchen and central island, as well as a dining area on the fully enclosed loggia, two elegant bedrooms with built-in wardrobes, each with direct access to the loggias. The master bedroom is closed off to create a study area. The night space is completed by a bathroom with toilet, a shower room with toilet and a guest toilet.

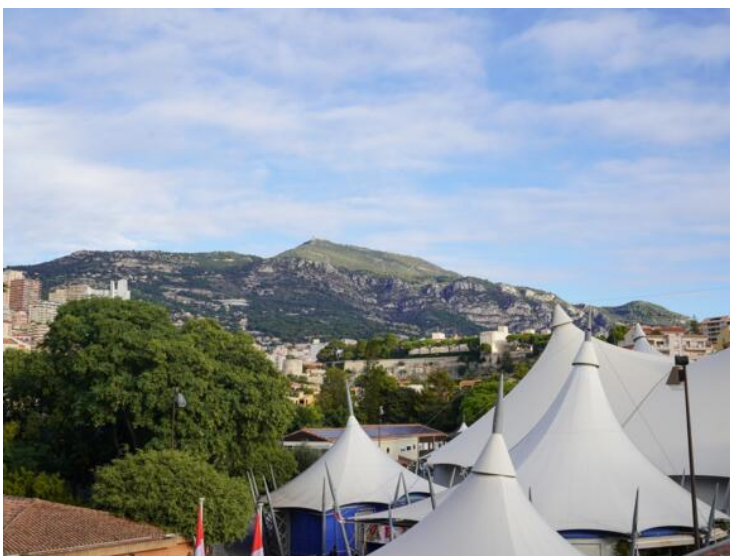
A car park completes this property.

With its optimised space and meticulous finish, this flat is an ideal opportunity for a main residence or an exceptional pied-à-terre in the heart of the Principality.

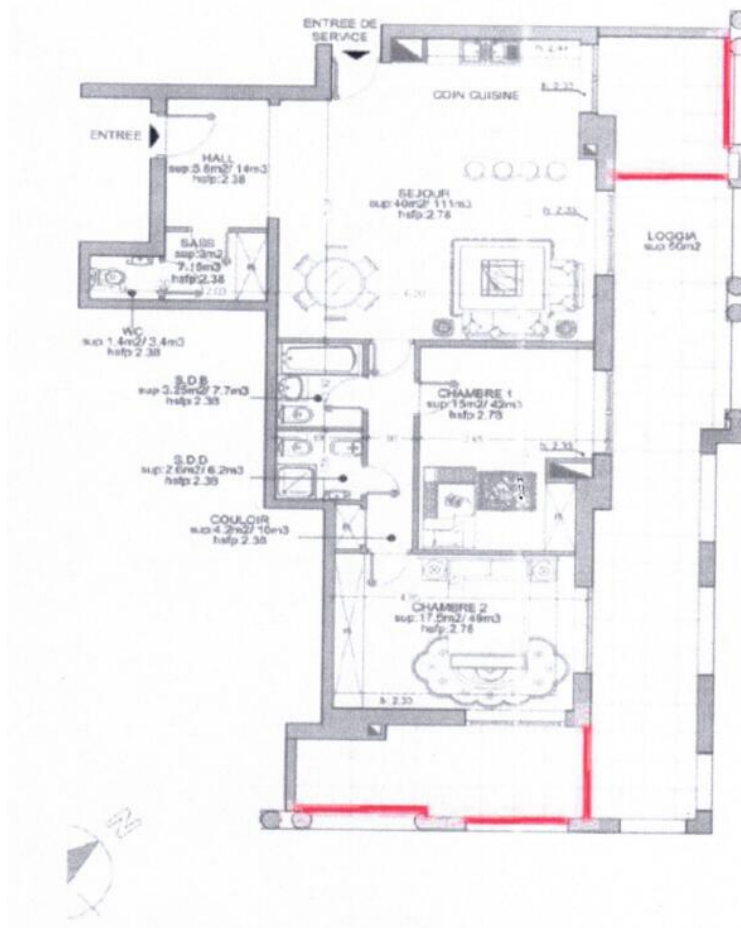


V1585  
3 / 5





V1585  
4 / 5



V1585  
 5 / 5